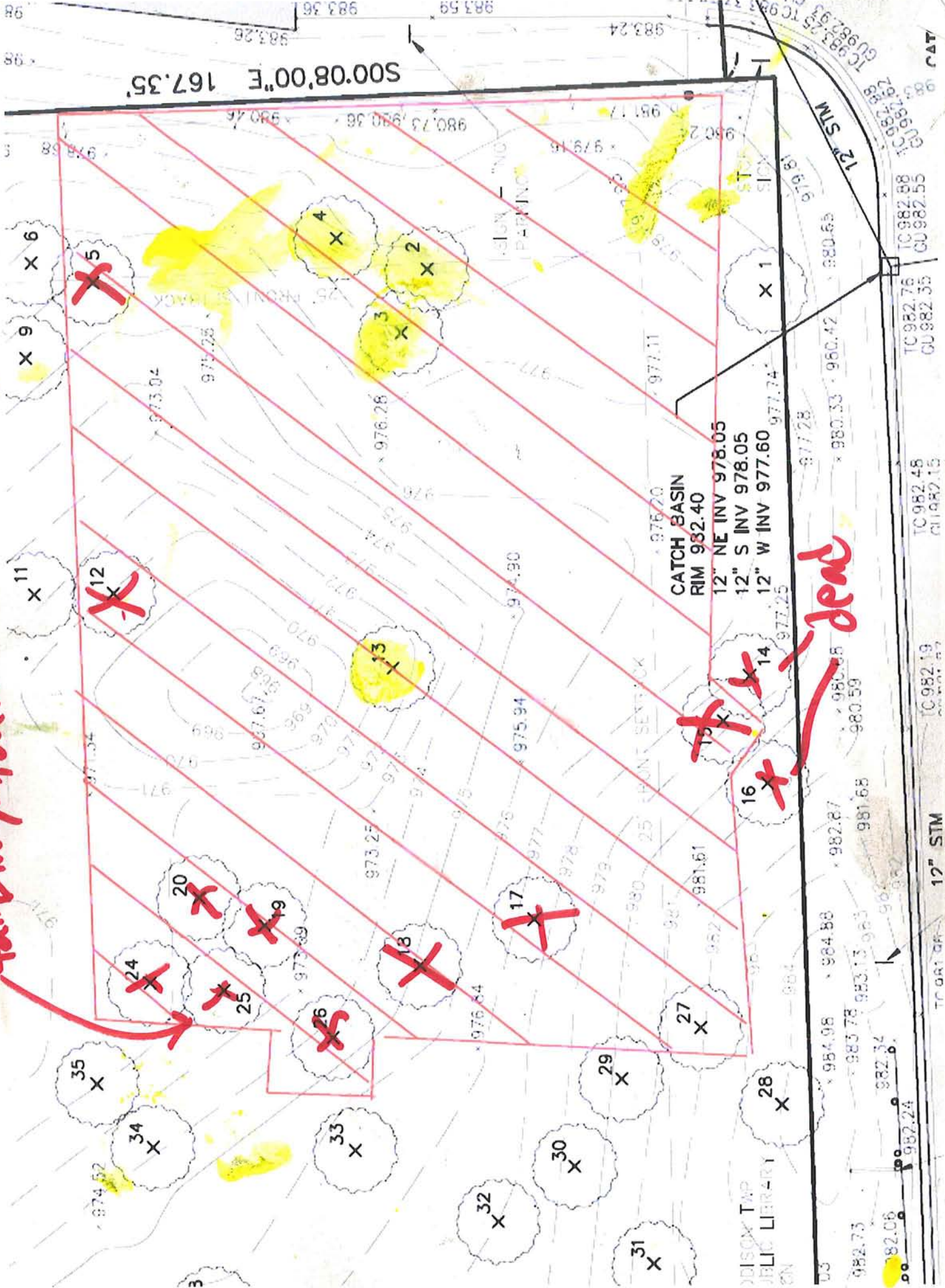


tail straight, out.



S00°08'00"E 167.35'

CATCH BASIN  
RIM 982.40  
12" NE INV 978.05  
12" S INV 978.05  
12" W INV 977.60

dead

12" STM  
17" STM  
CAT  
TC 982.76  
CU 982.35  
TC 982.98  
CU 982.55  
TC 982.48  
CU 982.15  
TC 982.19  
CU 982.25  
TC 982.76  
CU 982.35  
TC 982.98  
CU 982.55  
TC 982.48  
CU 982.15  
TC 982.19  
CU 982.25  
TC 982.76  
CU 982.35  
TC 982.98  
CU 982.55  
TC 982.48  
CU 982.15  
TC 982.19  
CU 982.25